



HUNTERS[®]
HERE TO GET *you* THERE



WILLOW HEY, BROMLEY CROSS

£495,000



Situated in the heart of sought-after Bromley Cross, this impressive 4-bedroom detached residence offers over 2100 sq ft of beautifully planned living space. Enjoying a generous corner position on a peaceful cul-de-sac, the home delivers excellent privacy and a fabulous family-friendly setting.

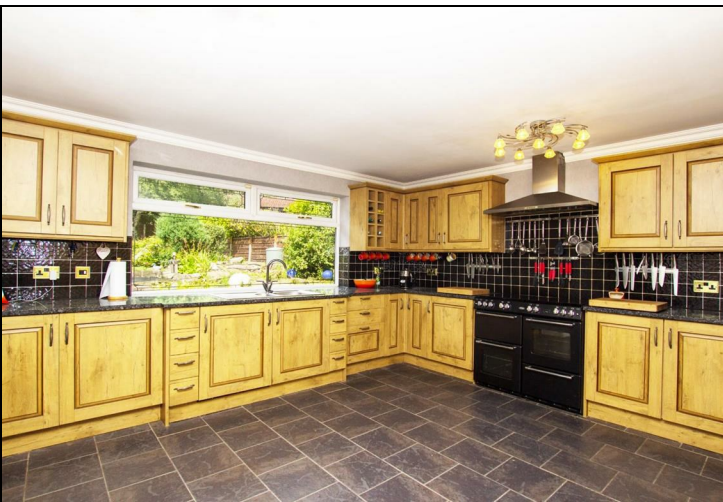
Inside, you'll find spacious and versatile accommodation comprising; entrance hall, open plan lounge & dining rooms, spacious kitchen, snug extension, office and ground floor WC. From the kitchen there is integral access into a double garage. To the first floor there is a landing offering access to four good sized bedrooms, four piece family bathroom and a master en-suite.

The standout feature is the lovely private rear garden, which offers an excellent balance of lawn, patio, and planting—ideal for summer gatherings, play, or quiet relaxation. The corner plot also allows extra outside space and the benefit of increased privacy. Further highlights include driveway parking and easy access to Bromley Cross's excellent schools, rail links to Manchester, and scenic countryside walks.

OUR THOUGHTS - *'If you're seeking a substantial, well-positioned home in one of Bolton's most desirable areas, this property deserves your early viewing'*

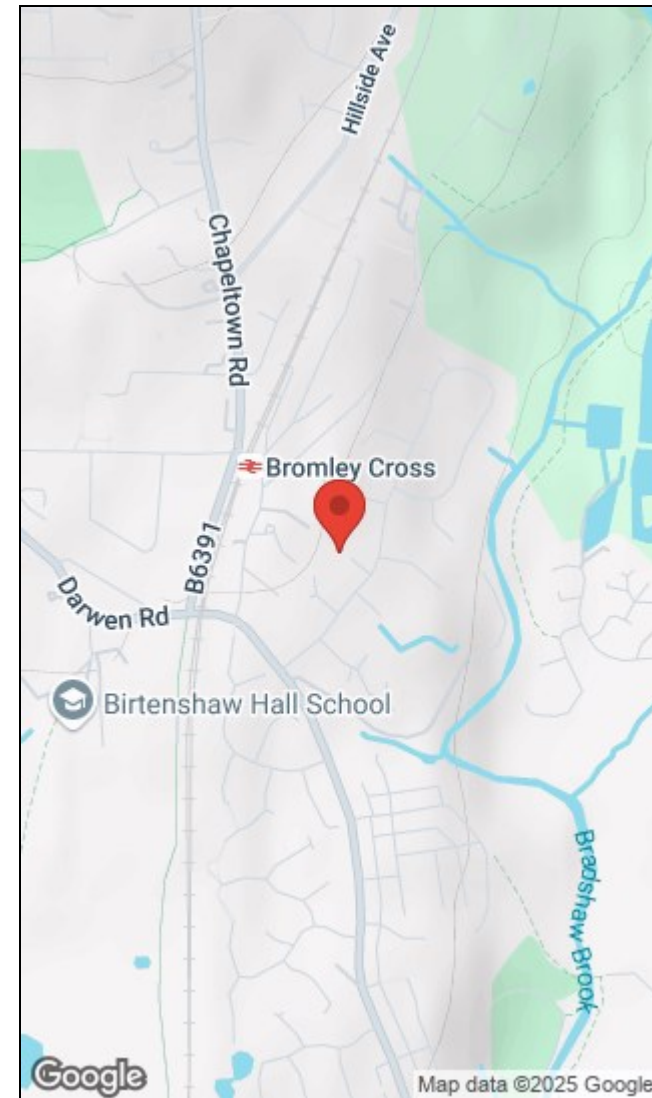
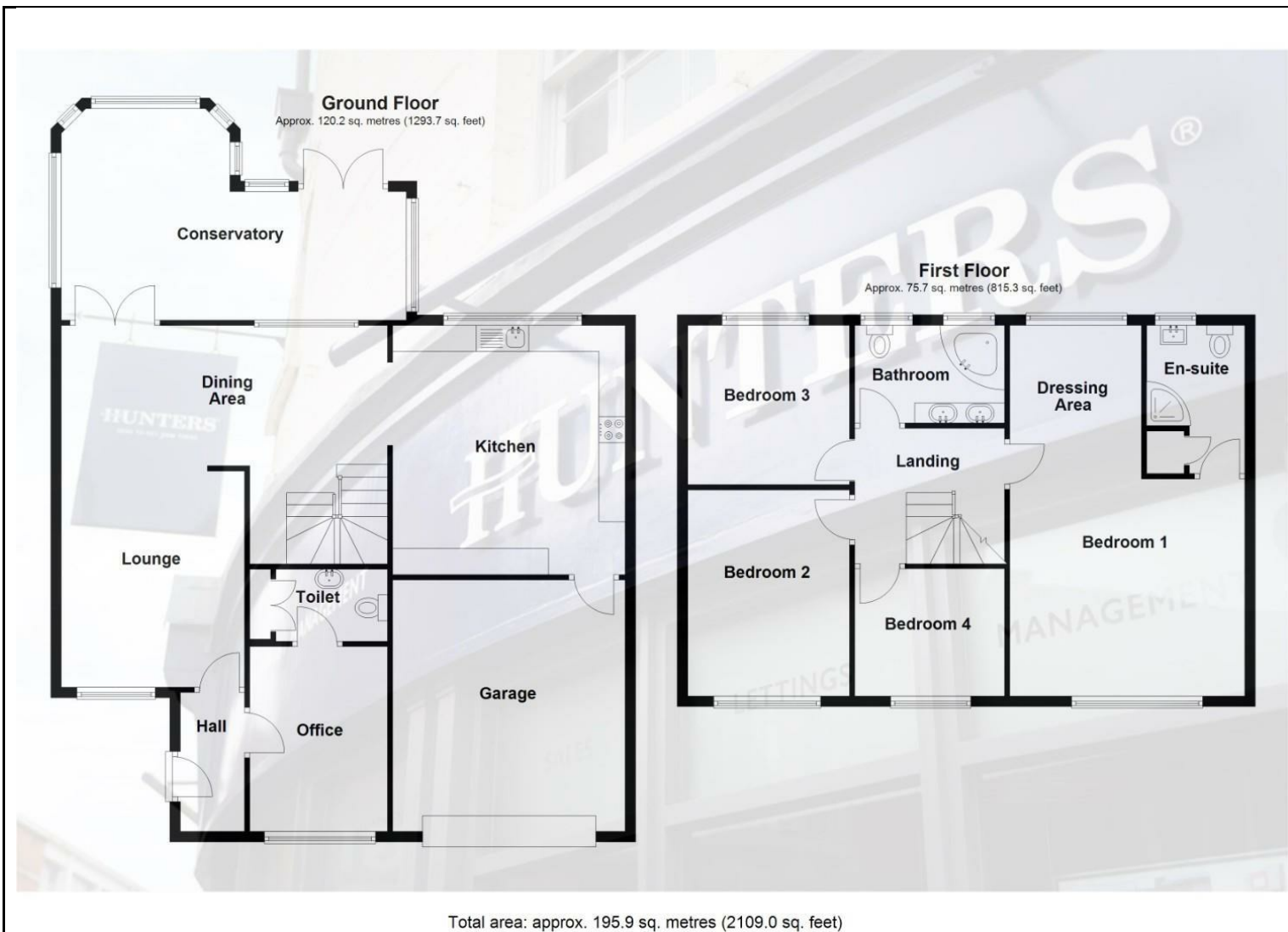
KEY FEATURES

- Substantial Detached Home
- Located In Bromley Cross
 - 4 Good Size Bedrooms
 - Excellent Rear Garden
 - Multiple Reception Rooms
- Corner Position On Quiet Cul-De-Sac
 - 2100 Sq Ft









207-209 Duckworth Street, Darwen, Lancashire, BB3 1AU | 01254 706471
darwen@hunters.com | www.hunters.com



This Hunters business is independently owned and operated by Baxter Helmn Estates Limited | Registered Address: 207 - 209 Duckworth Street, Darwen, Lancashire, BB3 1AU | Registered Number: 8986836 England and Wales | VAT No: 872 1369 16 with the written consent of Hunters Franchising Limited.